

# Anticipatory Set

**Please type this site in the URL's and offer your feedback!**

**Town Hall**

**<https://www.quia.com/sv/732238.html>**

**6<sup>th</sup> Grade Parent Orientation**

**<https://www.quia.com/sv/728896.html>**



# HOLICONG PARENT COUNCIL

February 18, 2016



Student Council Update

***Please welcome Student  
Council Officers***

***Sasha Temerte &  
Sarah Hutchison***

# Valentine's Day Candygrams

- Appreciation for friends & teachers
- Special note
- Staff Appreciation Gift



# Holicong Presents...



Thursday, March 10<sup>th</sup> @ 7 pm

Friday, March 11<sup>th</sup> @ 7 pm

Saturday, March 12<sup>th</sup> @ 2 & 7 pm

Advanced ticket sales coming soon!!!

# Holicong Winter Dance

**Who:** Open to ALL Holicong students only

**What:** Semi-formal Dance (food and music...and no jeans!)

**When:** February 26<sup>th</sup> from 7 – 9 pm

**Where:** Holicong Middle School (enter through “H” & takes place in cafeteria)

**Why:** Have fun with old friends and make new friends

**How:** Entrance is \$5 and a new or gently used book for the **HOLICONG BOOK DRIVE & LIBRARY**



# KvT Update

## December Door Decorating Results

7<sup>th</sup> Grade – 3 POINTS

8<sup>th</sup> Grade – 2 POINTS

9<sup>th</sup> Grade – 1 POINTS

## January Puzzle Partners Results

TBD (Freddy working very hard on involved math calculation)

# KvT Update

## Yearlong competition

Team	Total
7th Grade	8
8th Grade	4
9th Grade	5
Teachers	8

## February Competition

Coaches vs. Cancer Knockout Finals are next Thursday featuring...

### Teachers

Mike Canelli
Brian Novick
Josh Kaeser
Melissa Doll
Andy Kane
Chris Dallas
Jason Hepler
Pam Tanenbaum
Officer Phillips

### 7<sup>th</sup>

Olivia Sauer  
Shane Kennedy

### 8<sup>th</sup>

Hannah Kerest  
Anthony Cammoroto

### 9<sup>th</sup>

Jennifer Krzeminski  
Treyvonne Milam





# What is Relay for Life?



- Fundraising walk for the American Cancer Society
- Honors cancer survivors, caregivers & loved ones lost
- Opportunity to spend time with friends for a good cause

# CB Middle Schools Relay for Life



- Began in 2003 with participants from all five CB Middle Schools
- In 2013, CB was ranked #1 in the middle school category... **meaning we raised the most money out of all middle schools in the U.S!!!**

# Aside from walking, what else goes on at Relay?

- Celebration & milestone for participants, caregivers, survivors, parents, staff, and the community
- DJ for the music & a variety of activities to keep everyone active and involved
- Extra fundraising opportunities (ex. selling homemade items or face painting and many more)



# We picked a team and a captain... what's next ?

- Decide on a team name... the first word of your team name must be “Holicong”

Holicong Cancer Fighters - **GOOD**

No “the” → *The* Holicong Cancer Fighters - **BAD**

Holicong Ninja Warriors – **GOOD**

Too long → Holicong Students Raising Money And Working Hard To Be Cancer Warriors - **BAD**

- Register online by going to [cbsd.org](http://cbsd.org) and clicking on [“Relay for Life”](#)





American Cancer Society - Relay for Life of Central Bucks Middle Schools

Home Student Registration Chaperone Registration Organizer

Student Registration

Student Details

First Name :

Last Name :

Relay Team Name :

Are you a Captain :

Grade :

School :

Homeroom Teacher :

T-Shirt Size  
 S  
 M  
 L  
 XL  
 2XL

Emergency Contact Details

Emergency Contact Name :

Relationship to Student :

Emergency Contact Cell :  (xxx-xxx-xxxx)

Emergency Contact Home :  (xxx-xxx-xxxx)

Parent Email Address :

Re-Enter Parent Email Address :

As stated in our Code of Conduct (Board Policy 122) student participation in any extra-curricular activity is a privilege, which may be revoked or suspended when school rules are violated. Students are expected to conduct themselves properly at all times.

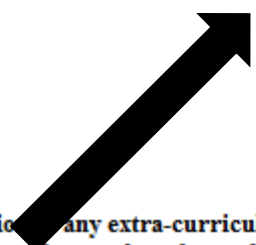
Yes

Submit Form

Once you register...

1. Print the email, get signature
2. Check for \$10
3. Give BOTH to your team captain

**\* Team captain hands ALL registration materials in together**



# What are my responsibilities?



- Register and pay \$10 fee (CHECKS ONLY)
- Raise an average of \$50 per team member
- Walk! Each team must have at least one, and preferably two people walking at all times (Remember why we are participating in this event!)

# How can I raise the \$50?



- ✓ **No school fundraisers this year**
- ✓ Create a fundraising event
  - ✓ Examples: neighborhood bake sales, carwashes, letter-writing campaigns, garage sales etc.
- ✓ The best fundraising is when **EVERYONE** on the team participates!

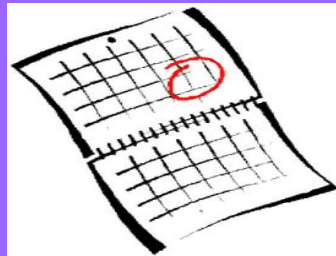


# Okay, now what?

- Get a team of 10-12 people together
- Choose a captain
- Decide on a team name that starts with “Holicong”
  - Ex. Holicong Hope, Holicong Cancer Crushers
- **EACH TEAM MEMBER MUST REGISTER ONLINE** (& hand in forms by Thursday, Feb. 25<sup>th</sup>)
- We will meet with team captains to review the next steps in the Relay process on Wednesday, Feb. 17<sup>th</sup>

## Keep in Mind...

- Meet three deadlines= go to Relay
  1. Registration: Thursday, Feb. 25<sup>th</sup>
  2. Chaperone List: April 26<sup>th</sup>
  3. \$50 donation average per team member: May 16<sup>th</sup>
- Miss just one deadline, you will not be participating





Holicong Huddle

***Please welcome ...***

***Makayla Romanus &  
Mary Duffner***

The background of the slide features a repeating pattern of the Holicong Athletic logo. Each logo consists of a stylized yellow and white wave-like shape above a dark grey silhouette of a person's head and shoulders, with three small white stars to the right. The logos are arranged in a grid pattern across the entire slide.

New Holicong Athletic Newsletter

[Holicong Huddle Newsletter](#)

[Holicong Huddle Prezi](#)



PARENTPOSITIVE

Partnerships creating a healthier, stronger community.

LENAPE MIDDLE SCHOOL • THURSDAY, FEBRUARY 18 • 7 PM

## Growing Healthy Together—

PARENTPOSITIVE

*Feeling overscheduled?* With so many activities, it can be difficult for families to make a commitment to their health.



Join **Jason Komasz, MD**, pediatrician and lead pediatric hospitalist of Doylestown Health's Della Penna Pediatric Center, to **learn small steps your family can take every day to live healthier.** The discussion will focus on getting a good night's sleep, healthy eating and balancing activities with family time. Leave with practical advice on developing a healthy family routine.



CB CARES

February 2016

# Backpack Newsflash



# Spring Sports

**SPRING SPORTS - Girls Soccer, Track & Field, Baseball or Softball**  
**Tentative Start Date is March 14, 2016**

In order to be eligible to tryout for a spring sport, you must complete the following forms:

- **If you played a fall or winter sport:**

- o Register the new sport on Family ID
- o A parent/guardian must complete section 7. The form must be turned in to Mrs. McCusker in guidance.

- **If you did not play a fall or winter sport:**

- o Complete registration on Family ID
- o Turn in section 6 of the physical to Mrs. McCusker in guidance. The form must be signed and dated by your physician after June 1, 2015.

**Please check the CBSD website for more information**

<http://www.cbsd.org/Page/251>

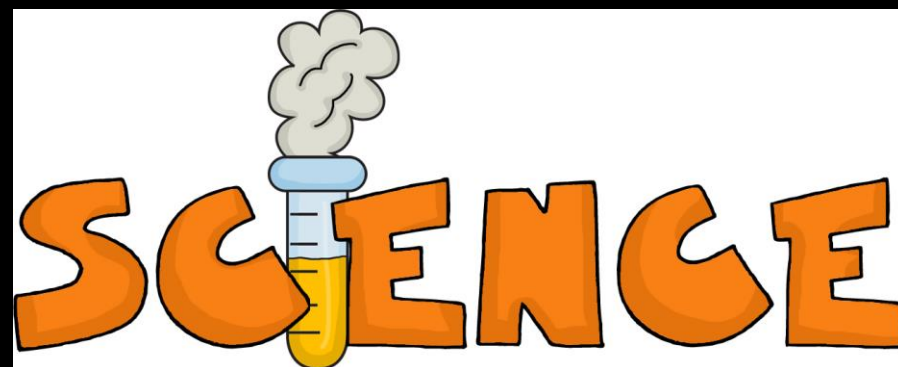


Science Updates

***Please welcome Science  
teacher***

***Mrs. Bannon***





# Opportunities @ Holicong

Google Science Fair

Bucks County Science Fair

You Be The Chemist Challenge

#girlSTEM Conference

Virtual labs



COMPETITION OVERVIEW

HOW TO ENTER

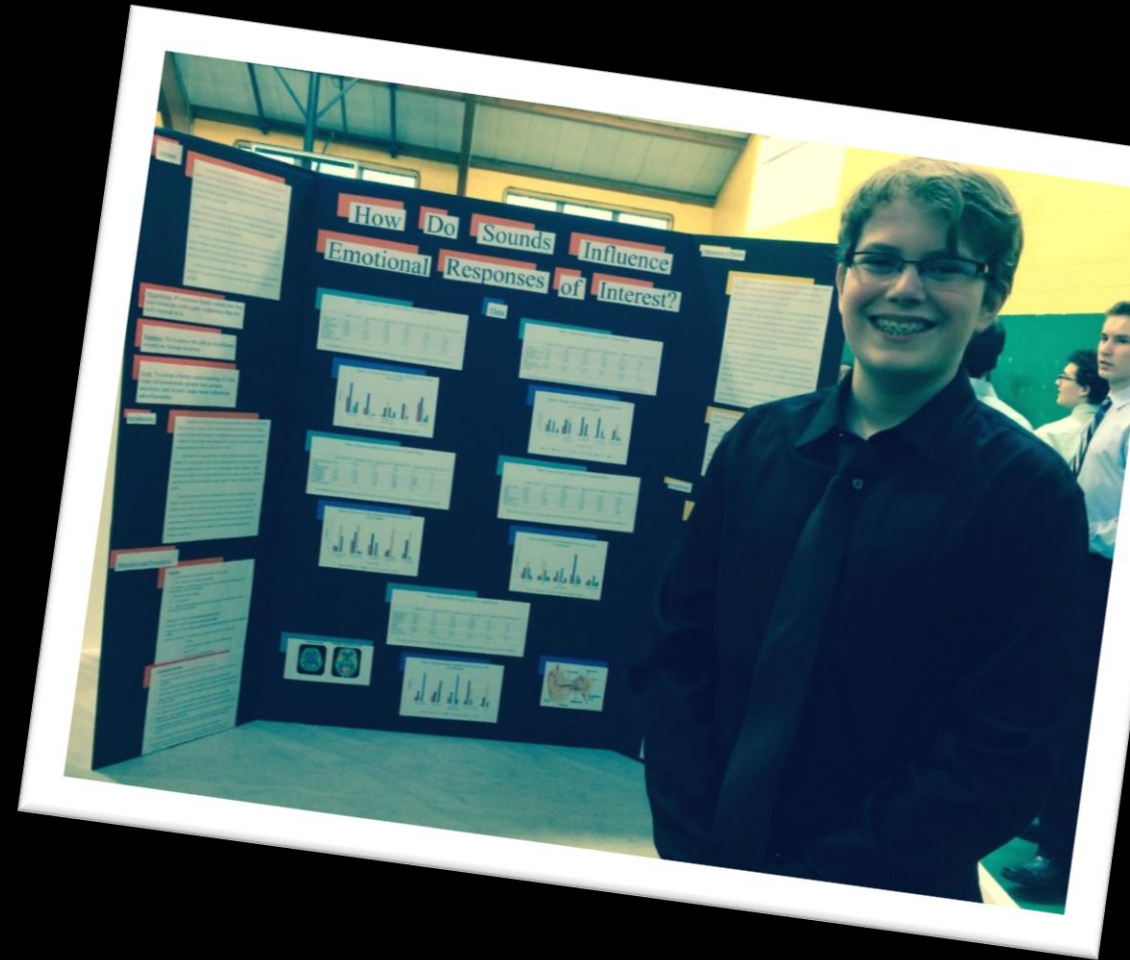
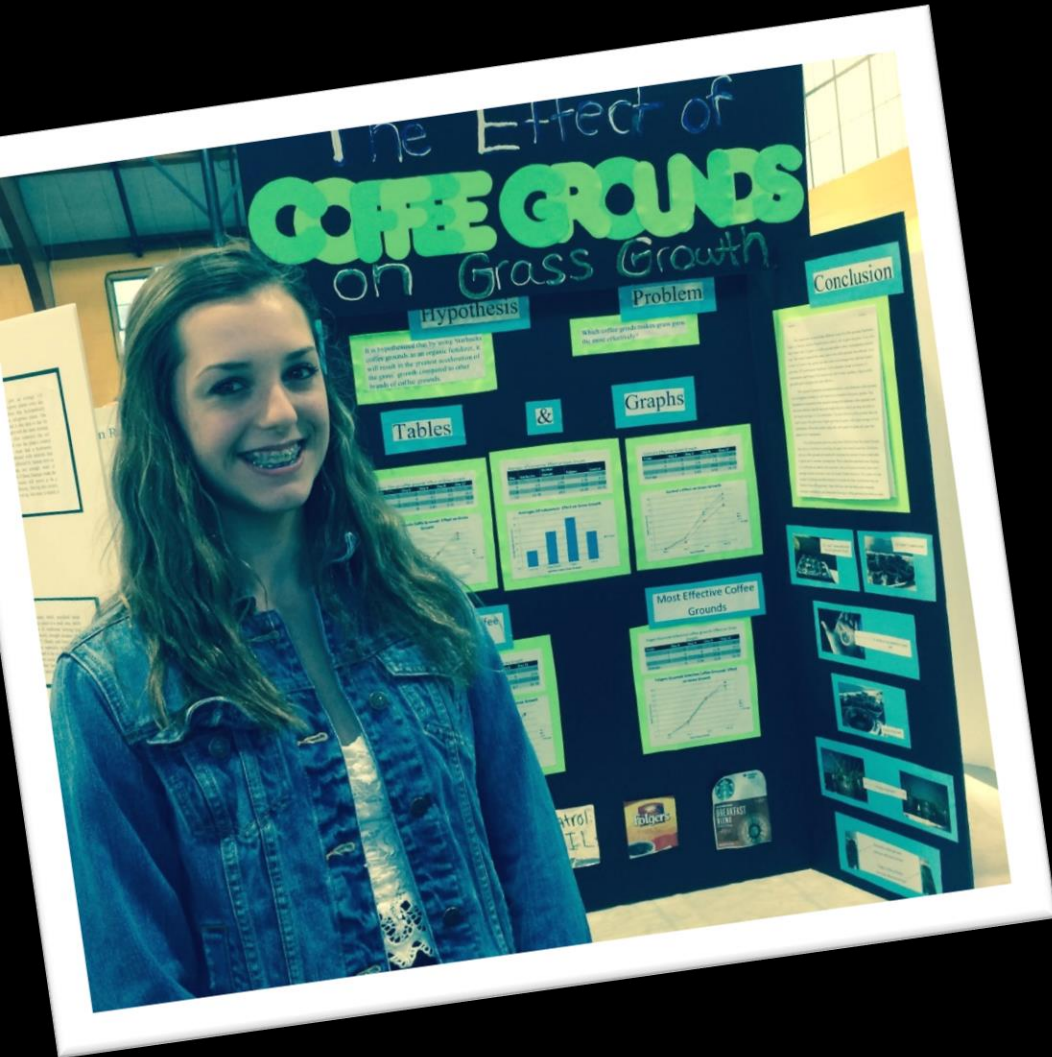
TEACHERS & PARENTS

SIGN IN

# Google Science Fair

- 8<sup>th</sup> grade Advanced Science students
- 9<sup>th</sup> grade students by choice
- Design and perform their own original experiment
- Some choose to also participate in the Bucks County Science Fair at Delaware Valley College.

# Bucks County Science Fair 2015 at Del Val College



\*\*\*2016: March 7-9th





**March 5, 2016**

- National academic contest that encourages grade 5-8 students to explore important chemistry and STEM concepts and their real-world applications
- Unique opportunity for a variety of community partners—including schools, industry, higher education, and community groups—to come together and show their support for STEM education
- Participation starts at the school level with qualifying exam and continues with Local, State, and National competitions
- Individual (not team-based) quiz-bowl format competition





**Applications being accepted  
until March 4<sup>th</sup>- see Mrs.  
Madden**

- The fifth annual #girlSTEM conference will be held on Thursday, May 26, 2016 at Delaware Valley University.
- #girlSTEM seeks to inspire middle-to-high school girls to pursue STEM- related fields (Science, Technology, Engineering, Math).
- #girlSTEM features interactive seminars with professional women, hands-on workshops, and open forum discussions.

Balancing chemical equations

pH/ Strength of acids and bases

pH 13.00  
Drain Cleaner (pH 13.0)  
Water  
1 L  
0.78 L  
 H<sub>3</sub>O<sup>+</sup>/OH<sup>-</sup> ratio  
 Molecule count

balanced +2  
Next  
 $2 \text{C} + 2 \text{H}_2\text{O} \rightarrow 1 \text{CH}_4 + 1 \text{CO}_2$

Potential and kinetic energy

Energy  
Kinetic  
Potential  
Thermal  
Total  
Speed  
Slow Motion  
Normal



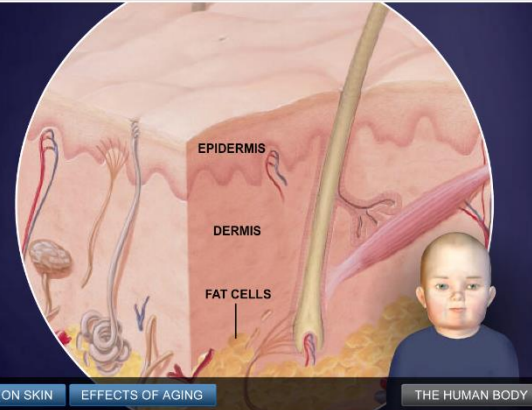
## Skin

Science and Space Home Innovation and Tech Archaeology Earth Health and Human Body Prehistoric World Space

### EFFECTS OF AGING

#### Infancy

Baby skin is soft and smooth, but it won't stay that way forever. Age brings about a variety of changes. Some changes are natural; others are the result of factors such as sun exposure or smoking.



SKIN ANATOMY STRESSES ON SKIN EFFECTS OF AGING THE HUMAN BODY

## Skin

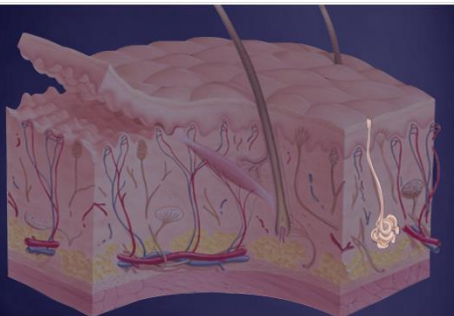
Science and Space Home Innovation and Tech Archaeology Earth Health and Human Body Prehistoric World Space

### SKIN ANATOMY

#### Sweat Gland

Every square inch (6.5 square centimeters) of skin contains about 650 sweat glands. These tiny ducts emit droplets of perspiration that cool the body as they evaporate. Sweat glands are also used by the body to remove certain waste materials from the blood.

EPIDERMIS	STRATUM CORNEUM
DERMIS	NERVE ENDINGS
SUBCUTANEOUS LAYER	ARRECTOR PILI
HAIR POLLICLE	SEBACEOUS GLAND
CAPILLARIES	SWEAT GLAND

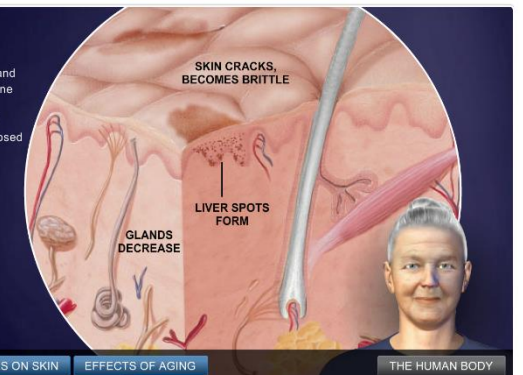


INTRO SKIN ANATOMY STRESSES ON SKIN EFFECTS OF AGING THE HUMAN BODY

### EFFECTS OF AGING

#### Old Age

The skin loses fat, collagen, and elastin and takes on a transparent look. Glands decline in number and output, causing dry and broken skin. Wounds take longer to heal. Melanocytes tend to cluster in areas exposed to the sun, causing dark brown blotches commonly called liver or age spots.



INTRO SKIN ANATOMY STRESSES ON SKIN EFFECTS OF AGING THE HUMAN BODY

Home Innovation and Tech Archaeology Earth Health and Human Body Prehistoric World Space



Curriculum Spotlight – Technology Education

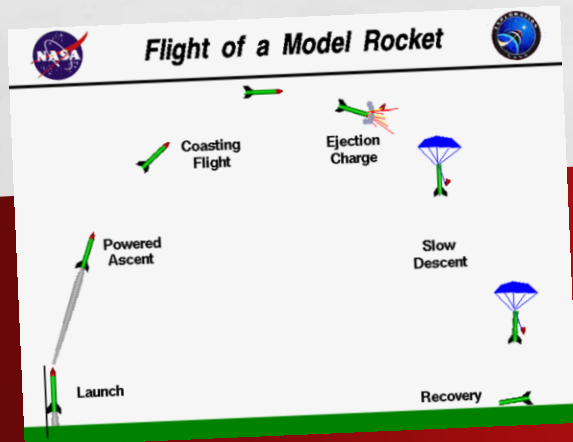
***Please welcome Technology  
& Engineering Education  
teacher***

***Mr. Dallas***

# 8th Grade Tech

- **DESKTOP CLOCK DESIGN**
- **TECHNICAL RENDERING**
- **MOUSETRAP POWERED VEHICLE**
- **MODEL ROCKET**
- **VINYL CUTTER / TUMBLER**

**MANUFACTURING ( FORM VS. FUNCTION, MACHINE SAFETY, DESIGN ELEMENTS)**  
**DRAFTING TOOL USAGE, PAGE LAYOUT, MATT CUTTING FRAMES**  
**STEM (PHYSICS, MATHEMATICS, PROBLEM SOLVING, ENGINEERING, DESIGN LOOP)**  
**FLIGHT, TRANSPORTATION, DESIGN LOOP AND STEM**  
**NEW TECHNOLOGY (VINYL CUTTER AND DESIGN)**





# 9th Engineering and Design

- **LONGBOARD/SK8BOARD DESIGN**

- **DRAFTING AND SCALE (TEMPLATE CREATION, USE OF DRAFTING TOOLS TO COMMUNICATE A DESIGN)**
- **MANUFACTURING ( FORM VS. FUNCTION, MACHINE AND LAB SAFETY, DESIGN ELEMENTS)**

- **SKATEBOARDING COMPANY**

- **MARKETING TO A TARGET AUDIENCE AND STRATEGIES**
- **COMPANY NAME AND LOGO**
- **BUSINESS CARDS**
- **SALES POSTER**



- **NEW TECHNOLOGIES**

- **VINYL CUTTER ( LOGO AND MASKING)**
- **PLOTTER- SCALE, PAGES LAYOUT AND SIZES AND POSTER CREATION.**



# 9th Engineering Processes

- **VIDEO GAME/ BLU-RAY TOWER DESIGN**

- **DRAFTING AND SCALE (TEMPLATE CREATION, USE OF DRAFTING TOOLS TO COMMUNICATE A DESIGN)**
- **MANUFACTURING ( FORM VS. FUNCTION, MACHINE AND LAB SAFETY, DESIGN ELEMENTS)**
- **BILL OF MATERIALS AND PROJECT PLANNING**
- **FINE WOODWORKING FROM ROUGH CUT 4/4 LUMBER TO BRILLIANT FINAL RESULT!**
- **PRACTICAL MEASURING APPLICATIONS**



- **WOOD LABORATORY SAFETY**

- **MACHINE SAFETY PORTFOLIO AND STATE EXAMS**
- **TABLE SAW, JOINTER, PLANER, SLIDING COMPOUND MITER SAW, RADIAL ARM SAW, ROUTER, DRILL PRESS**
- **HAND TOOL USAGE AND MEASURING AND LAYOUT**

- **UPCYCLING AND RECYCLING IN THE LAB**

- **CUTTING BOARDS WITH LEFT OVER RIPPING'S**
- **PALLET PROJECT**

**Sawdust Making 101**

*a guide for the beginning woodworker*



# 9th Design Illustration

- **ORTHOGRAPHIC SCALE DRAWING**
  - **DRAFTING AND SCALE (TEMPLATE CREATION, USE OF DRAFTING TOOLS TO COMMUNICATE A DESIGN)**
  - **PRACTICAL MEASURING APPLICATIONS**
- **ISOMETRIC SCALE DRAWING**
- **FLOOR PLANS**
  - **HAND DRAFTING CONVERTED TO AUTOCAD 2015 PLOTTED DRAWINGS**
  - **CONCEPTUAL PLANNING**
- **ELEVATION VIEWS**
  - **FRONT AND SIDE ELEVATIONS OF A SIMPLE HOUSE DESIGN**
- **NEW TECHNOLOGIES**
  - **HP PLOTTER – SCALE AND PAGE LAYOUT**

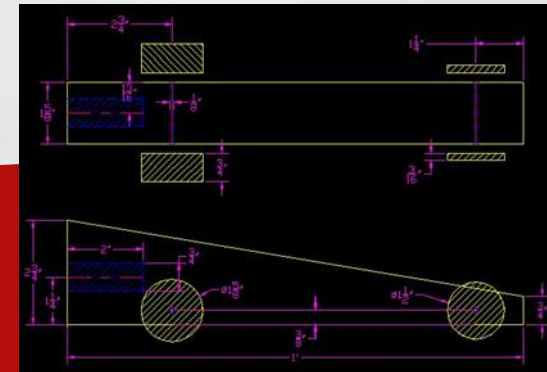


# 7th Grade Tech

- **CO2 DRAGSTER DESIGN CHALLENGE**
  - **DESIGN LOOP VS. DESIGN PROCESS**
  - **SCALE DRAWING WITH FULL USE OF DRAFTING TOOLS**
  - **BUILDING OF A PROTOTYPE TO TEST DESIGN AND THEORY**
    - **INTO TO LAB SAFETY AND LAB ENVIRONMENT**
  - **RACE COMPETITION**



- **ORTHOGRAPHIC SCALE DRAWING**
  - **DRAFTING AND SCALE (TEMPLATE CREATION, USE OF DRAFTING TOOLS TO COMMUNICATE A DESIGN)**
  - **PRACTICAL MEASURING APPLICATIONS**



- **GOOGLE SKETCH UP AND THE DREAM HOUSE DESIGN**

- **SCALE DRAWING OF STUDENT BEDROOM**
- **DOOR AND WINDOW SCHEDULE OF THEIR BEDROOM**
- **PERSPECTIVE VIEW OF ACTUAL BEDROOM WITH ACCURATE MEASUREMENTS**
- **DREAM HOUSE CREATION**



Program Planning FAQ

***Please welcome Holicong  
School Counselors***

***Mrs. Kleeman & Mr.  
Striano***





Current 7<sup>th</sup>/Rising 8<sup>th</sup> Grade  
&  
Current 8<sup>th</sup>/Rising 9<sup>th</sup> Grade

Program Planning

**Frequently Asked Questions**



# Current 7<sup>th</sup>/Rising 8<sup>th</sup> Grade FAQ

- **What specials will my student take in 8<sup>th</sup> grade?**
  - Students will complete the “wheel” of specials by taking classes they did not take in 7<sup>th</sup> Grade (Art, FCS, Music, PE, Tech Ed)
  - Music students will continue with their performing class and take the two specials they did not take in 7<sup>th</sup> grade (Combination of Art, Engineering Technology, or Family Consumer Science)
  - Non-performing music students will take PE/Health, Art, Engineering, and either Family Consumer Science or Exploring music depending on what they took in 7<sup>th</sup> grade
- **When does my student learn a World Language?**
  - Students choose a world language to study in 8<sup>th</sup> grade unless it is determined they will benefit from Reading for one more year
  - French and Spanish are equitable in difficulty
  - French 1 is only offered in 8<sup>th</sup> grade

# Current 7<sup>th</sup>/Rising 8<sup>th</sup> Grade FAQ

- Does my student have to continue with the performing music schedule or can my student join if they were not in music in 7<sup>th</sup> grade?
  - Students have the opportunity to change this option during the program planning process (students in band/orchestra should have prior experience)
  - Parents will be aware of a change through the course verification process
- Can I choose what specials my child takes in 8<sup>th</sup> grade?
  - No, as mentioned in the previous slide every student is scheduled to take the full spectrum of specials offered in the middle school curriculum. Students have opportunities to choose electives in 9<sup>th</sup> grade
- When does PEN fit into my 8<sup>th</sup> grader's schedule?
  - PEN 8 is completed in the Art curriculum for 8<sup>th</sup> grade. PEN students are enrolled in a special section of Art that is designed around PEN enrichment

# Current 7<sup>th</sup>/Rising 8<sup>th</sup> Grade FAQ

- I see my student was recommended for Advanced Social Studies/Science what does that look like?
  - Students going into 8<sup>th</sup> grade can be recommended for Advanced Science and/or Social Studies by their current teacher based on academic performance, standardized test scores, writing ability, and preparedness for success at the next level.
- What is the difference between Advanced and Academic courses?
  - The advanced curriculum is a high level of rigor in regards to the expectations for writing, analyses and comprehension, and amount of work in and out of the classroom setting. Advanced Science and Social Studies consist of year-long projects that require a substantial time investment
- Does my student need to take Advanced in 8<sup>th</sup> grade to take Advance in 9<sup>th</sup> grade?
  - No, advanced courses in 8<sup>th</sup> grade are not pre-requisites for taking 9<sup>th</sup> grade advanced courses

# Current 8<sup>th</sup>/Rising 9<sup>th</sup> Grade FAQ

- How many credits does my student earn in 9<sup>th</sup> grade? How many credits are needed to graduate high school?
  - Students will earn 6.25 credits in their 9<sup>th</sup> grade year. For a standard diploma students need 27.25 credits to graduate. (See Program of Studies for scholar's diploma requirements)
  - Students have the opportunity to earn up to .50 credits of their 1 credit Physical Education requirement in 9<sup>th</sup> grade
- Do 9<sup>th</sup> Grade classes appear on high school transcripts?
  - Yes, 9<sup>th</sup> grade is the first year of high school even though it is housed in the middle school building, and the 9<sup>th</sup> grade classes are designed with a high school level of rigor. These classes do appear on the transcript for Central Bucks East – the final grade for the course will appear on the transcript
- Will my student still play sports for Holicong?
  - No, students in 9<sup>th</sup> grade begin playing sports for CB East. Band students are also able to participate in the CB East Marching Band beginning in 9<sup>th</sup> grade



# Current 8<sup>th</sup>/Rising 9<sup>th</sup> Grade FAQ

- **What electives can my student take in 9<sup>th</sup> grade?**
  - Non-performing music students will take .50 credits of PE/Health. In addition, they will have their choice of 9 electives (3 in each of Art, Technology, and FCS)
  - Performing Music students will take .50 credits of their performing music class. In addition, we strongly encourage students to take .50 credits of PE/Health, but students have the option of deferring PE/Health to the high school
- **Are Advanced classes “weighted” in 9<sup>th</sup> grade?**
  - 9<sup>th</sup> grade classes are not weighted in 9<sup>th</sup> grade. Weighting based on (academic, honors, AP) course selection begins in 10<sup>th</sup> grade.

# Questions?

- For more information, please access the Program Planning link on the Holicong Guidance website - <http://www.cbsd.org/Page/25094>.
- For specific information regarding this process for your student, please contact the appropriate guidance counselor.
  - 7<sup>th</sup> Grade
    - Last Names A-D: Deb Kleeman [dkleeman@cbsd.org](mailto:dkleeman@cbsd.org)
    - Last Names E-J: Barb Louderback [blouderb@cbsd.org](mailto:blouderb@cbsd.org)
    - Last Names K-Z: Greg Striano [gstriano@cbsd.org](mailto:gstriano@cbsd.org)
  - 8<sup>th</sup> Grade
    - Deb Kleeman [dkleeman@cbsd.org](mailto:dkleeman@cbsd.org)





# Superintendent Parent Advisory Report

**Nichole Farrior  
&  
Katherine Mirarchi**



Exit Slip

Mandatory Exit Slip

Answer all 3 questions!



# HOLICONG PARENT COUNCIL

February 18, 2016